

Features

- 1. NEMA4/IP67 **waterproof and dustproof design**, all interfaces with CNLINKO connectors
- 2. Aluminum Alloy enclosure, more resistant to corrosion, shock and vibration
- 3. Adopting **EETI solution, capacitive touch** + industrial-grade, high-performance
- 4. DC 12V power supply (DC24V, 9-36V Optional), support power-on boot, 7x24hours
- 5. **High brightness 1500nits sunlight-readable** for outdoor application

Specification

Screen	LCD Panel	Panel size	18.5"
		Resolution	1920*1080 16:9
		Brightness (cd/m ²)	1000nits, sunlight-readable
		Contrast ratio	1000:1 (Typ.)
		View Angle	80°/80°/80°/85° (R/L/U/D)
	Touch	Touch Type	10 points Capacitive Touch
		Touch Optional	5 wires Resistive Touch or No Touch
		Surface Hardness	G+G, ≥7H; or ≥3H
		Touch Interface	USB
		Working Life	≥50 million times
		Surface Treatment	Anti-glare Glass /AR/AF Optional
		Glass Treatment	Optical Bonding with Capacitive Touch
		Dimmer	Dimmer Knob /Dimmer Cable/Light Sensor
		Brightness (cd/m ²)	1500nits, Optional

Environment	Temperature	Operating: -20 to 70°C, storage: -30 to 70°C
	Humidity	10%~90% @ 30°C, non-condensing

I/O Interfaces	1xHDMI, 1xUSB, 1xDC (1xVGA Optional)
Power Supply	DC12V (DC 24v, 9-36v Optional)

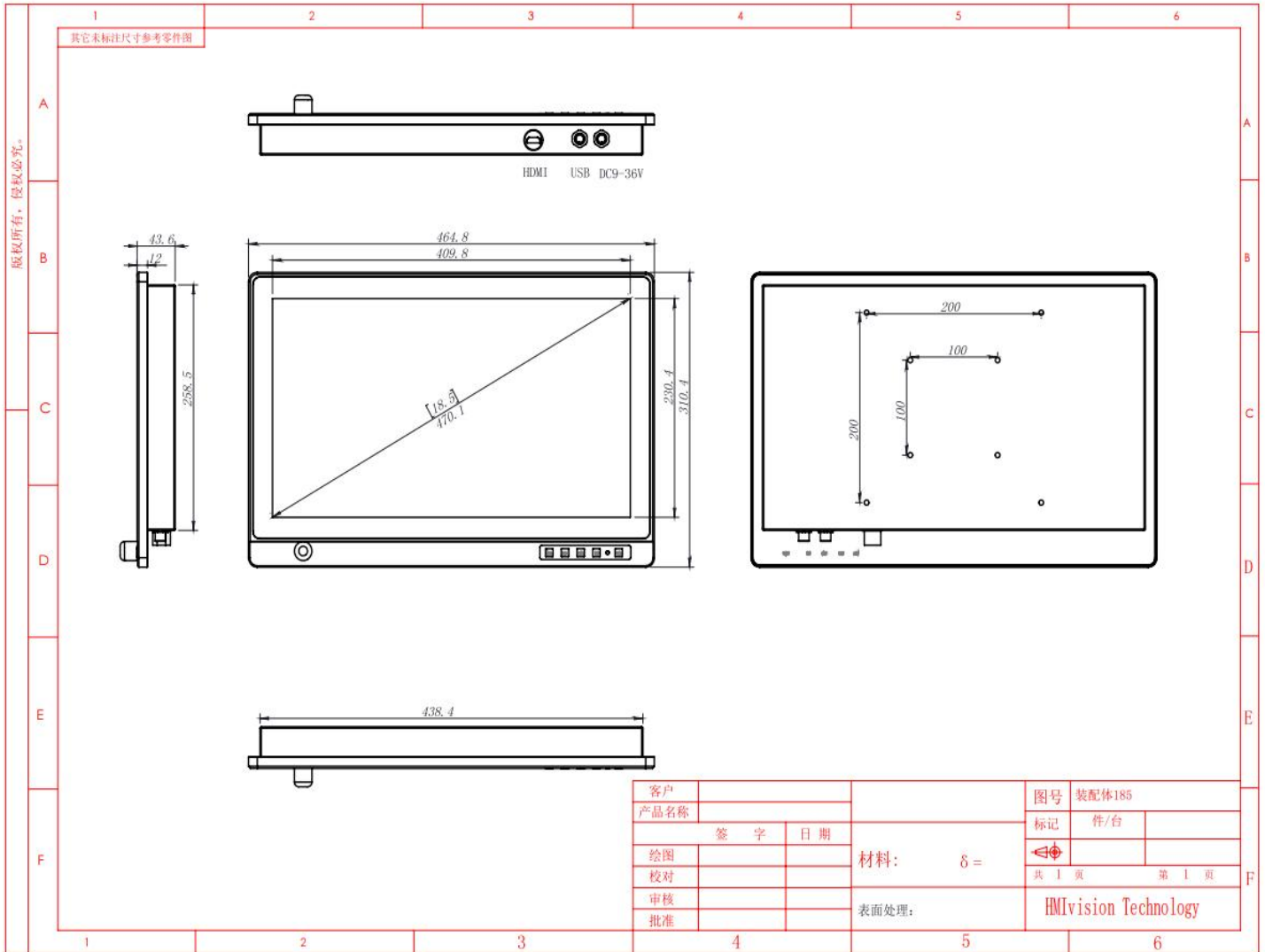
Enclosure	Material	Front Aluminum Alloy+Back High Strength Cold Rolled Steel Me
	Color	Black
	VESA	100*100mm/200*200mm
	IP grade	FULL IP67 Waterproof
Dimension	Net weight	5.5kg
	Gross weight	6.5kg
	Product size	464.8x310.4x43.6mm
	Packing size	530*450*170mm

Packaging	1xMonitor, 1xDC Power Cable, 1xAdaptor, 1xUSB Cable, 1xHDMI, 1xVGA
OS	Support Windows 7/8/10, WES, Linux, Ubuntu, Debian, Android, etc.
Mountings	Desk stand holder
	Wall mounting brackets, Embedded mounting screws (optional)
Warranty	1-year free warranty

Sizes Optional

7" 8"	10.1"	12.1"	13.3"	15" 15.6"	17"	19"	21.5"
1024*600 1024*768	1280*800	1024*768 1280*800	1920*1080	1024*768 /1920*1080	1280*1024	1280*1024	1920*1080
4:3	16:10	4:3	16:9	4:3 16:9	4:3	4:3	16:9

Drawing



Accessories

- 1x Monitor
- 1x USB
- 1x HDMI
- 1x Power cable
- 1x Adaptor