



Features

- 1. NEMA4/IP67 waterproof and dustproof design, all WATERPROOF connectors
- 2. SUS304 stainless steel enclosure, more resistant to corrosion, shock and vibration
- 3. Adopting EETI solution + industrial-grade touch, high performance
- 4. DC 12V power supply (DC24V, 9-36V Optional), support power-on boot, 7x24hours
- 5. High brightness 1000nits for outdoor application, 400nits Optional for indoor

Specification

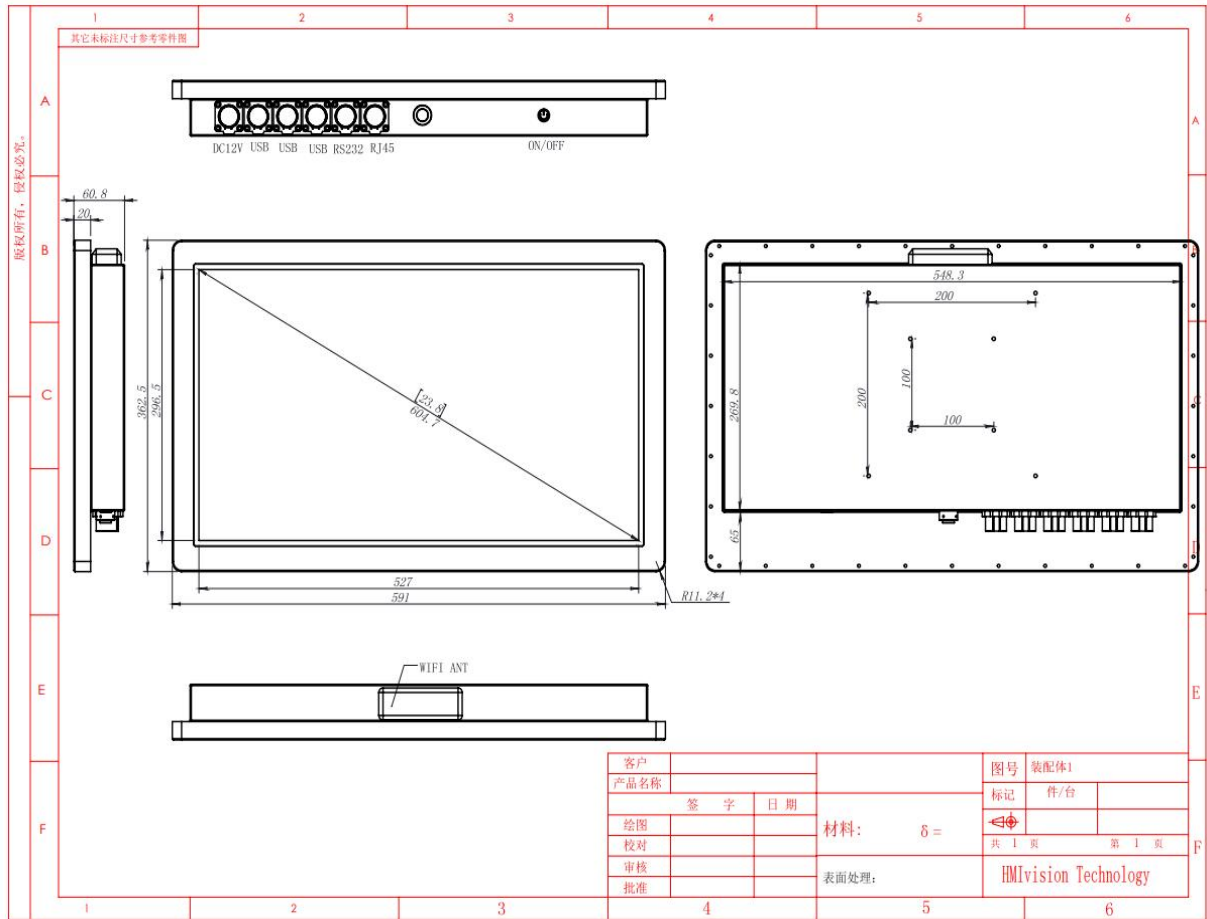
Mainboard	CPU	RK3288 Cortex-A17 quad core,1.8GHz, fanless
	RAM	2GB/4GB
	SSD	8G/16G/32GB/64GB
	OS	Android 6.0, 7.1, 8.0, 9.0

Screen	Panel size	21.5"	
	Resolution	1920*1080 16:9	
	Brightness	1000nits (cd/m ²) (400nits Optional)	
	Touchscreen		10 points Capacitive Touch
			5 wires Resistive Touch Optional
	Surface Treatment		Anti-glare Glass
			Optical Bonding
	Dimming		Auto-dimming with light sensor
	Contrast ratio		700:1(Typ.)
	View Angle		80°/80°/80°/80°(R/L/U/D)
Surface Hardness		G+G, ≥7H	
Working Life		≥50 million times	

Power Supply	Working voltage	DC12V (DC24V, 9-36V Optional)
	Temperature	Operating: -20°C to 70°C, storage: -20°C to 70°C
Environment	Relative humidity	10%~90% @ 30° C, non-condensing
	Material	Stainless Steel
Enclosure	Color	Stainless Steel
	VESA mounting	100x100mm/100x200mm
	IP grade	Full IP67 waterproof
	Net weight	10.5kg
Dimension	Gross weight	12kg
	Product size	591x362.5x60.8mm
	Packing size	710x490x180mm

I/O Interfaces		3*USB, 2*RS232, 1*RJ45, 1*DC IN, 1xOn/Off, 1xWIFI BOX, 1xBluetooth
		RS485 Optional
		Speaker Optional
Accessories		1x12V 5A Adaptor, 1x Power Plug, AllxPorts Waterproof Cables
OS		Support Android, Linux, Ubuntu, Debian, etc.
Mountings		Embedded mounting screws
		Wall mounting brackets; Desk stand holder (optional)
Warranty		1-year free warranty

Drawing



Sizes

7" 8"	10.1" 10.4"	12.1"	13.3"	15" 15.6"	17" 17.3" 18.5"	19" 19" wide	21.5" 23.8" 24"
1024*600 1024*768	1280*800 1024*768	1024*768 1280*800	1920*1080	1024*768 /1920*1080	1280*1024 1920*1080	1280*1024 1440*900	1920*1080
16:9 4:3	16:10 4:3	4:3 16:10	16:9	4:3 16:9	4:3 16:9	4:3 16:10	16:9

Configuration

CPU available

RK3399 Dual Cortex-A72+Quad Cortex-A53, 2.0GHz, fanless
RK3568 Quad Core 64-bit Cortex-A55, ARM, 2.0GHz, fanless
Intel® Celeron J1900, quad core, 2.0GHz, fanless
Intel® Core I3-4005U, dual core, 1.7Ghz, fanless
Intel® Core I3-5005U, dual core, 2.0Ghz, fanless
Intel® Core I3-7100U, dual core, 2.3Ghz, fanless
Intel® Core I5-4200U, dual core, 1.6Ghz, fanless
Intel® Core I5-5200U, dual core, 2.2Ghz, fanless
Intel® Core I5-6200U, dual core, 2.3Ghz, fanless
Intel® Core I5-7200U, dual core, 2.5Ghz, fanless
Intel® Core I7-4500U, dual core, 1.8Ghz, fanless
Intel® Core I7-6500U, dual core, 2.5Ghz, fanless
Intel® Core I7-7500U, dual core, 2.7Ghz, fanless